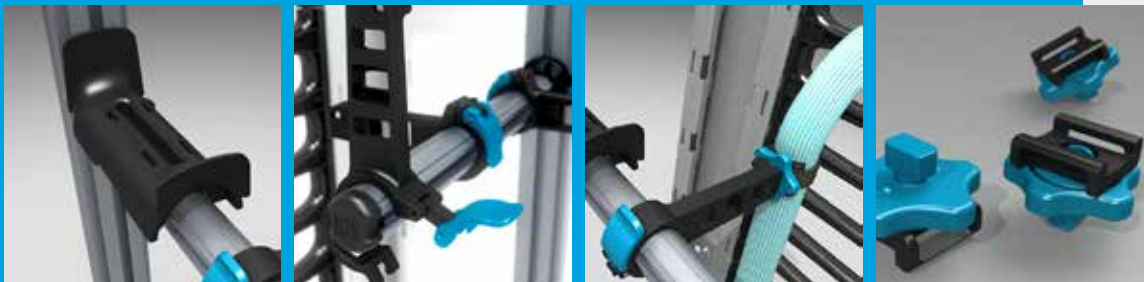


e-Book

Motive® Cable Manager

Maximize Impact, Optimize Design



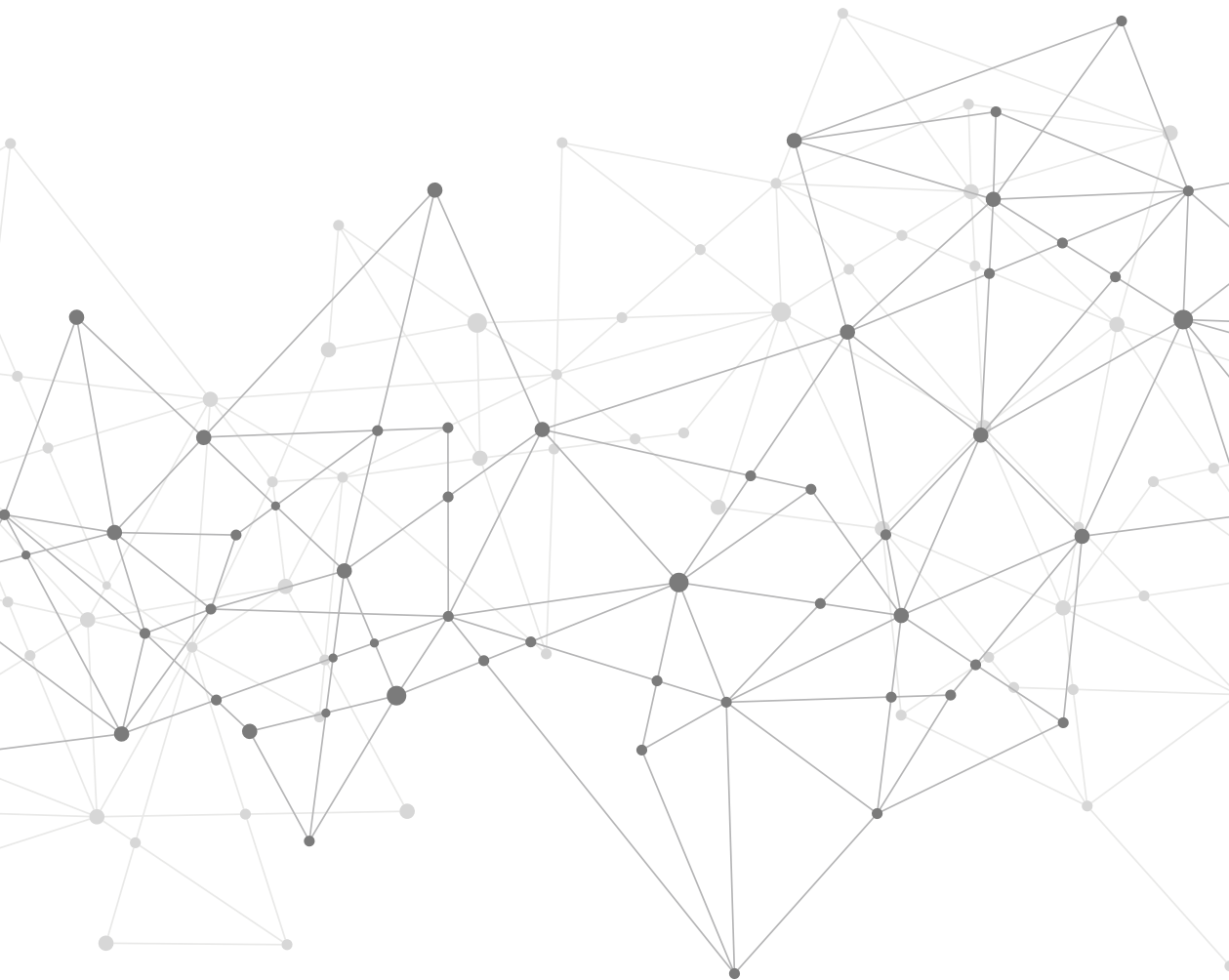
Today, it is increasingly critical that businesses remain competitive in delivering network availability as they prepare for the impact of emerging technologies, like 5G wireless, the Internet of Things (IoT) and Industry 4.0 as they extend their network to new environments or the edge.

Most people in the Information and communications technology (ICT) industry equate network availability with the reliability and performance of cabling infrastructure itself. Are there latency or downtime issues? What is the signal quality?

But, where does network availability begin?



If cabling is the backbone of a network, then a large part of the equation is the level of network performance offered by the cable management structure. Cable management can enable—or inhibit—everything from the signal integrity of a single cable, to the overall performance of a large data center.



“ Often taken for granted, network cabling installation can be as little as 10% of your IT installation cost but cause 80% of your network problems if not installed correctly.”

Network Cabling Installation Services



This e-book, prepared by Chatsworth Products (CPI), is designed to provide the information you need to have the right conversations with clients about the vital role that cable management infrastructure plays in improving overall business operations.

This resource highlights the challenges you may encounter and presents a cable management solution that intuitively offers ways to overcome those challenges. This solution will ultimately help to simplify and maximize your efforts as you work to enhance your customers' network availability—regardless of the application—so they can stay ahead of the competition and you can move on to your next job faster.



When it Comes to Cable Management, What Is Your Role or Profession?

Consultancy, Designer or Architect

Consultants, designers and architects have the task of educating customers on the critical role that cable management infrastructure plays in network performance. In turn, they are responsible for proposing and ensuring cable management solutions, that when implemented, meet the aesthetic needs and functional requirements of the client.



Installer or Contractor

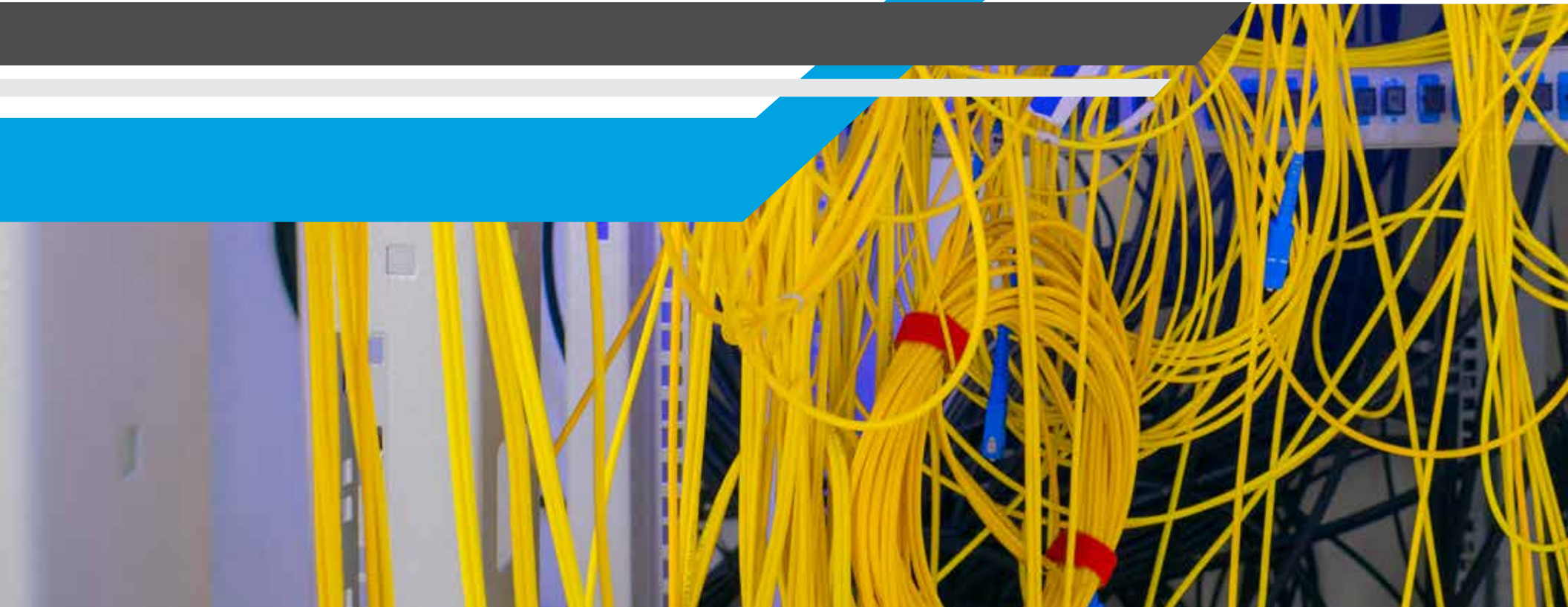
Installers and contractors must “carry the torch” by creating, building and installing the solution specified by the consultant, designer or architect to deliver a flexible, efficient and manageable infrastructure, and do so on-time and within budget. All the while, installers and contractors must minimize disruption and mitigate surprises to the business, regardless of if their client is replacing, upgrading or expanding network infrastructure.

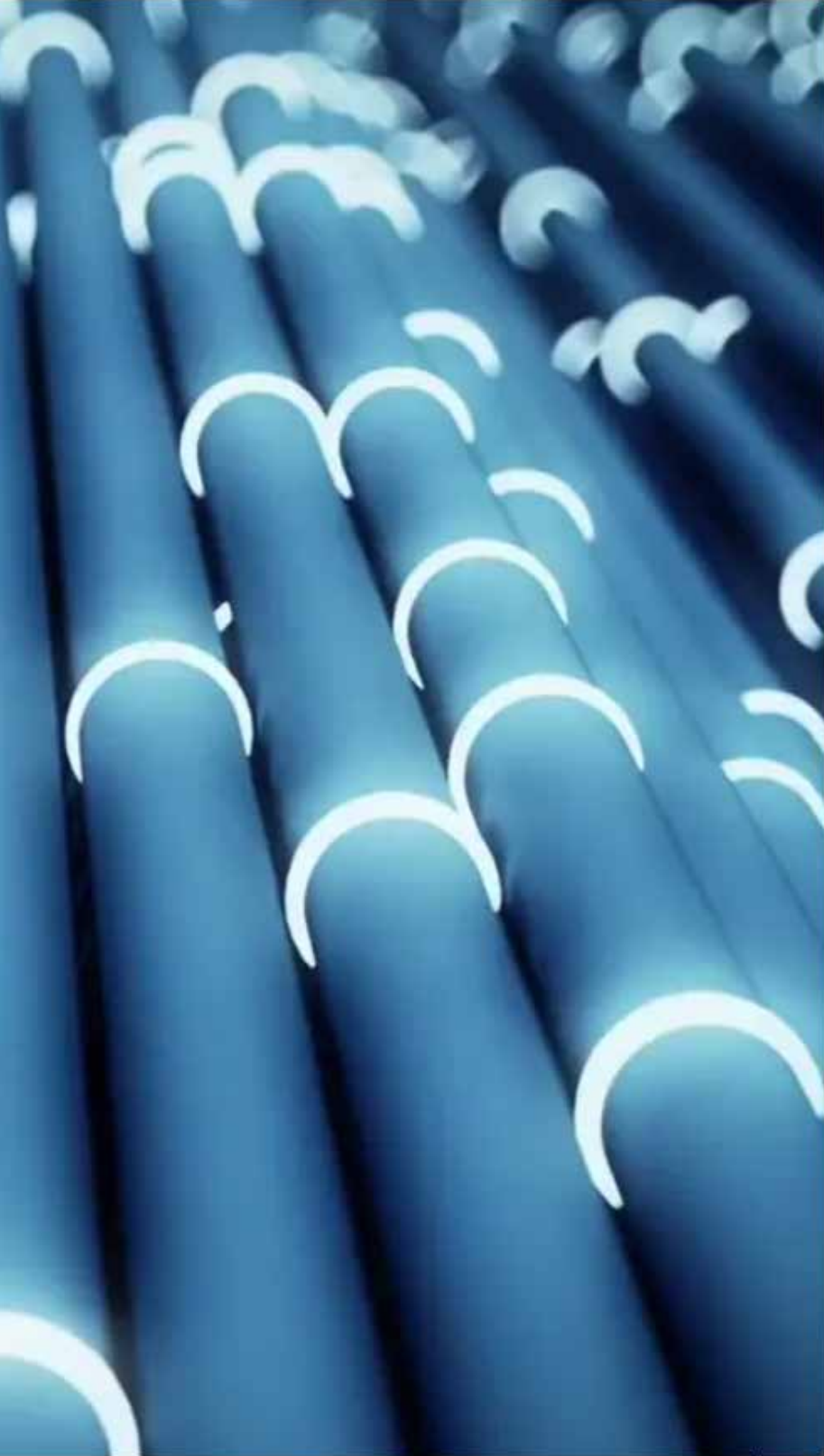


The Importance of Proper Cable Management

Along with airflow management, cable management is one of the biggest challenges faced by network installers and IT teams in data centers and telecommunications rooms. While you probably have an idea of what bad cable management is, it doesn't have to be this way.

You can achieve proper cable management through your infrastructure. **But, why does it matter anyway?**





By achieving proper cable management, you are delivering:



Optimal signal quality

A properly configured cabling environment helps ensure maximum signal quality and transmission speed by eliminating kinks, twists and sharp bends.



Improved scalability, maintenance and service

Cable management allows easier and safer access to individual components, and simplifies moves, adds and changes (MACs). This makes it easier to integrate additional racks and components in the future.



Enhanced aesthetics

A clean and well-organized cabling environment enables higher productivity and can influence a client's impression of your business. Your space is a reflection of your work, and the effort to stay clean, neat and organized won't go unnoticed.

“The cable management market is expected to garner **\$25.1** billion by 2022, registering a CAGR of **12.4%** during the forecast period 2016-2022.”

Allied Market Research

What is the Impact of Poor Cable Management

Achieving optimal signal quality, improved scalability, maintenance and enhanced aesthetics while successfully administering proper cable management isn't always easy.

There are factors inherent to the specified product, application and working environment that can impede the delivery of a high-performing network.



Cables that are mixed and intertwined can cause signal interference.



Too many cables bundled together can cause improper bend radius and weight distribution.



Extensive bending and cables that aren't properly secured can cause signal degradation.



When multiple cable bundles are tightly grouped and blocking critical airflow and heat dissipation paths, excessive heat buildup can cause equipment failures.

Three Common and Persistent Challenges Experienced on a Regular Basis

In an effort to get inside perspective around what factors impede on-the-job cable installation, CPI polled a group of contractors and installers. They identified three common and persistent challenges experienced on a regular basis during their project work.



01

Adherence to industry codes, standards and best practices

A lack of knowledge and training around industry standards and best practices is a typical challenge. This negatively impacts design and installation.

A lack of knowledge and training around emerging technologies like Power over Ethernet (PoE) impact design and installation.



02

Designer specifications

Specified products are often difficult to use or have a lack of documentation providing information on how to use the product and tools correctly to maximize effect.



03

Ongoing moves, adds and changes

Time constraints often result in a hurried and poorly executed cable installation. This impacts the maintenance and management of the specified product when it comes to ongoing MACs.

Your Solution Starts Here

Motive® Cable Manager

Drawing from CPI's extensive experience in cable management and close relationship with installers, contractors and end-users, CPI began development of a one-of-a-kind cable management solution. The goal was to deliver a new offering—unlike any other—to the industry. A solution that would provide unmatched innovation, unparalleled intuitiveness, enhanced aesthetics and robust, reliable network integrity to cable manager ownership.

Motive® Cable Manager was the result.



“The rapid evolution and heightened complexity of today’s telecommunications technology has transformed cable design, installation, and management into a highly specialized art and science. No longer defined by static standards, successful cabling infrastructure now requires superior solutions.”

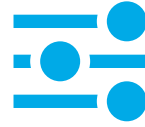
Cabling Installation & Maintenance,
“The Art, and Science of Effective Cable Management”

Cabling
Installation & Maintenance



Designed specifically to meet your needs and solve for persistent, common cabling challenges.

Motive Cable Manager was developed to provide the essential building blocks for delivery of a professional, organized cable installation, while inherently taking into account industry best practices and standards.



High Configurability

Versatile configurability and fiber-friendly design meets the demands of high-density cabling requirements, while maintaining proper bend radii and slack management.



Signal Quality

Protects network integrity by providing superior cable and cord management.



Cabling Best Practices

Motive was carefully engineered to promote proper cabling practices regarding cable slack, bend radii and organization.



Maximum Utilization of Space

The only cable manager in the industry that offers a patented central track system, one that enables unlimited adjustability with flexible direct support for cable bundles, while allowing maximum use of interior space.



Time and Labor Savings

Intuitive, tool-less accessories can be placed anywhere in the cable manager, enabling support and management of cables, as well as quick attachment, removal and adjustment.



Simplified Deployment

Superior form and functions provide quick and easy MACs thanks to an intuitive design and tool-less adjustability. All adjustment points on Motive are highlighted in blue for easy identification and quick adjustment.



Supports current and future cabling needs

Motive addresses advanced PoE applications where higher wattages require adequately spaced, smaller cable bundles to avoid excessive heat accumulation.

Making good on its promise to stand alone in the marketplace, Motive Cable Manager was awarded a patent for its central track system and set of tool-less accompanying accessories that facilitate numerous cable segregation configurations, while enabling maximum space utilization. To date, Motive is the only cable manager in the market that simultaneously and successfully offers these features.

CPI has been a sponsor of the BICSI Cabling Skills Challenge since 2008. The Motive Cable Manager made its debut during the 13th annual event in January 2020.



Reduce Your Time to Deployment

The unique design of Motive's patented central track and accompanying tool-less accessories provides numerous cable segregation configurations that allow for direct support of fiber optic or copper cables with optimal airflow through the cable manager, preparing networks for higher wattage in Power over Ethernet (PoE) and other critical applications.

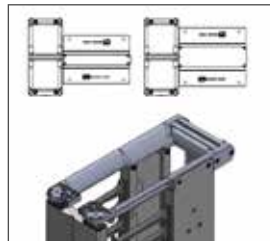
Reduce Your Time to Deployment

Every Motive Cable Manager includes tool-less accessories to support a variety of applications right out of the box.

Checklist for Success



Frame has extruded aluminum profile with a patented central track providing unlimited adjustability with adaptable, direct support for cable bundles using a host of tool-less cable management accessories.



Large radii are designed into many of the frame elements to protect and support cables as they enter and exit the manager.



Touch points are highlighted in blue for easy identification and quick adjustment.



Dual-hinged door opens to the right or left and offers patented push-to close convenience.



Hook feature on inside of front door provides a dedicated, secure location for hanging test meter.



“ The Motive line of cable management is a game changer. The ability to add support and strain relief virtually anywhere in the vertical manager is a huge upgrade. And the added hook to hang your test unit is genius!.”

Jeff Endemann, RCDD, TECH
Owner, JE Technical Services, Inc.
Parma, OH



Accessories

A Half Spool Kit

Half Spools snap on to the Accessory Rod Assembly to provide slack management and bend support. Use two spools to create a complete round spool.

B Rotating Management Fingers

Rotating Management Fingers position anywhere front-to-back along the Accessory Rod Assembly to secure and isolate cable bundles. They rotate and lock into position every 45 degrees, and accommodate up to four Cable Bundle Swivels, providing cable support where needed

C Accessory Rod Assembly

The Accessory Rod Assembly attaches to the central track at any point. It features tool-less, vertical adjustability and serves as the foundation for all of Motive's cable management accessories.

D Cable Bundle Swivel Kit

Designated to accommodate up to 3/4-inch wide hook-and-loop fasteners, Cable Bundle Swivels add flexibility and enhance cable bundle support. They can be used anywhere on the central track or Accessory Rod Assembly, as well as multiple points on the Rotating Management Finger, and allow for quick attachment, removal and adjustment of cable bundles.

E Tool-less Bend Radius Kit

The Tool-less Bend Radius Kit for Fiber Patch Cords helps users easily obtain proper bend radius support for fiber optic patch cords when transitioning through T-shaped cable guides. The Tool-less Bend Radius Kit snaps onto the finger manager and can be used for new or retrofit applications. It can be installed in upward or downward orientations on either side of a T-shaped cable guide.



CPI BIM Drawings

CPI provides architects, engineers and other design professionals with unlimited, free access to its extensive library of Building Information Modeling (BIM) files. Building models are shown to scale and manufacturer details can be entered into the 3D model, allowing important issues in the design to be identified. Use BIM files to speed up project completion and improve labor productivity, ultimately reducing final construction spending.

Get started. →

Cable Fill Tables

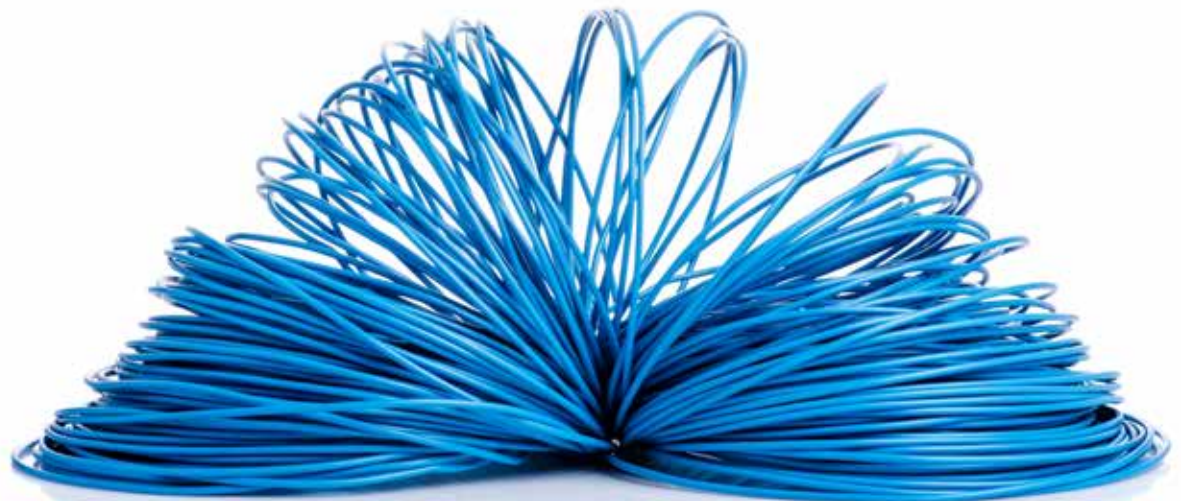
Get the recommended and maximum cable fill values for all of CPI's cable management and runway products. Available in multiple electronic formats, the table allows you to quickly estimate fill values based on cable specification.

Get started. →

Simplify Your Project Design

A great deal of precision and thought goes into the design of today's data centers, enterprise networks, and equipment specification.

When you're ready to look further into Motive Cable Manager and how it can help your business achieve network availability, administer proper cable management and simplify network deployment, consider utilizing CPI's wide variety of high-quality, unique solutions that allow for future technology and evolving standards, which make specification and installation even simpler.



Take the Next Step

Motive Cable Manager's unique, groundbreaking design offers a level of innovation and sophisticated engineering that is still unprecedented in the industry. That's because the inspiration, collaboration and development happened with our customers, for our customers. It results in a level of confidence and peace of mind that comes with the fact that there is no need to search for the toolbox, deal with trivial documentation or accessories that make it tough to do the job or move on to the next.

If you're ready to see how the Motive Cable Manager's unmatched innovation, unparalleled intuitiveness and robust system reliability can work for you, [contact your local distributor or reseller here](#).



Learn More

You can also acquire additional knowledge by reviewing the following resources:

Videos:

Motive Cable Management
Accessory Overview

[Watch now. →](#)

Motive Cable Management
Assembly Overview

[Watch now. →](#)

Edge and Enterprise Solution
Overview

[Watch now. →](#)

Blogs:

Chatsworth Products' Motive
Vertical Cable Manager
Receives Platinum Award for
Breakthrough Design

[Read more. →](#)

Motive Vertical Cable
Manager's Breakthrough
Design Receives Patent

[Read more. →](#)

Whitepaper:

Four Technologies That
Will Affect Your Enterprise
Network, And How To Support
Them In Your Premise
Networks

[Download. →](#)

Website:

Cable Management

[Learn more. →](#)



About Chatsworth Products

Chatsworth Products (CPI) is a global manufacturer of products and solutions that protect your ever-growing investment in information and communications technology for IT and industrial automation applications. We act as your business partner and are uniquely prepared to respond to your specific requirements with global availability and rapid product customization, giving you a competitive advantage. With decades of experience engineering thermal, power and cable management solutions for the data center, enterprise networking and industrial enclosure markets, CPI is well positioned to provide you with unequalled application expertise, customer service and technical support, as well as a global network of industry-leading distributors.



CHATSWORTH PRODUCTS

©2020 Chatsworth Products, Inc. All rights reserved. Chatsworth Products, Clik-Nut, CPI, CPI Passive Cooling, eConnect, Evolution, GlobalFrame, MegaFrame, Motive, QuadraRack, RMR, Saf-T-Grip, Secure Array, SeismicFrame, SlimFrame, TeraFrame and Velocity are federally registered trademarks of Chatsworth Products. CUBE-iT, EuroFrame and Simply Efficient are trademarks of Chatsworth Products. All other trademarks belong to their respective companies.

