

# INTERNATIONAL STUDY CENTRE

Explore Scotland with  
the **free bus travel**

(Transport Scotland, under 22s)

Study in Glasgow, **UK's  
3rd best student city**

(QS Best Student Cities 2026)



[isc.strath.ac.uk](https://isc.strath.ac.uk)

**THE PLACE OF USEFUL LEARNING**

# WHY STRATHCLYDE?

## A top 15

UK university\*, and  
UK University of the Year^

(\*The Times and The Sunday Times Good  
University Guide 2026; ^Daily Mail University  
Guide 2026)

.....

## Scottish University of the Year

(The Times and The Sunday Times  
Good University Guide 2026)

.....

## First university

to win the coveted  
'Times Higher Education  
University of the Year'  
title twice

(2012 & 2019)

.....

## Home to a triple-accredited

business school:  
AACSB, EQUIS & AMBA

.....

## Top 20

in the UK for graduate  
prospects and student  
experience

(The Times and The Sunday Times  
Good University Guide 2026)

.....

### Scholarships

Joint scholarships are  
available for the pathway  
programme and the degree  
study. Please visit our website  
for more information: [isc.  
strath.ac.uk/how-to-apply/  
scholarships](https://isc.strath.ac.uk/how-to-apply/scholarships)





# THE INTERNATIONAL STUDY CENTRE WELCOMES YOU

Here at the University of Strathclyde International Study Centre, we are dedicated to providing specialist degree preparation for international students.

Our programmes combine academic modules, study skills and English language training. These skills are designed to provide you with the best opportunity to succeed when you progress onto your degree programme at the University of Strathclyde.

The International Study Centre introduces you to the style of teaching that you will experience when you progress on to your degree at the University of Strathclyde. This includes tutorials, seminar-style classes and some large group lectures. You will be assessed regularly throughout the course to help us monitor your progress, and experienced staff are always available to help you with anything you need, both inside and outside of your academic studies.

## Pre-courses

### Prepare for Success

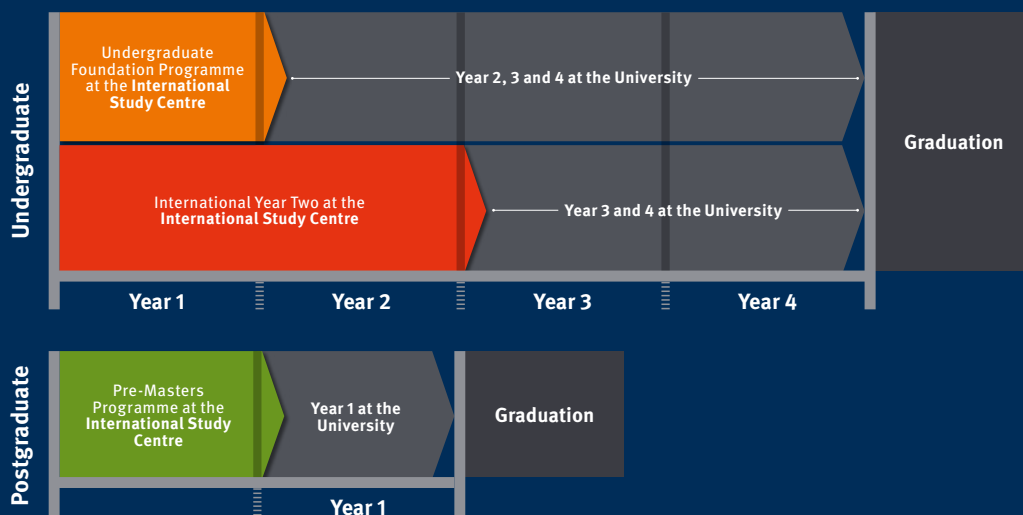
Join our free online preparation course to improve your expectations, skills and readiness ahead of starting your academic pathway programme. The course is designed to provide you with practical advice, guidance and support, so that you are ready to succeed from day one of your academic programme.

### November start (Enhanced Induction)

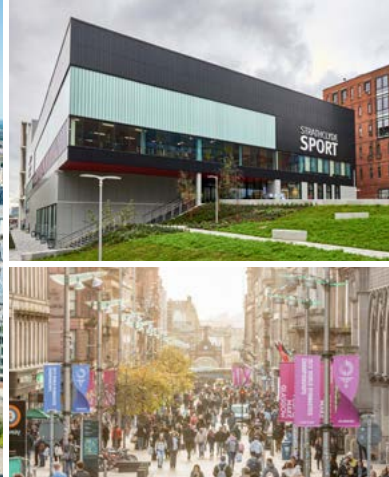
If you want to settle into your new environment and become familiar with the International Study Centre prior to starting your academic pathway programme in January, the Enhanced Induction starts in November and consists of three additional weeks of life, learning and language skills, at no additional tuition fee.

**97% of International Study Centre students** who completed their course were offered a place to study at the University of Strathclyde in 2024.

## Your study plan options



Note: This is an example timeline. Some exceptions apply. Find out more on the website.



# DISCOVER STUDYING IN GLASGOW, SCOTLAND

## LOCATION

**Glasgow is one of Scotland's largest, most vibrant cities.**

The city has an abundance of sights to see, as well as exciting food, music and sports scenes. It is a compact city that is full of culture. Additionally, Glasgow has excellent transport links that make it easy to visit the rest of the UK, EU and the world.

Cultural highlights include:

- Famous artworks at the Kelvingrove Art Gallery and Museum, and Gallery of Modern Art.
- Riverside Museum, displaying many objects from Glasgow's history.
- Touring the city's striking street art (look out for the Panda or Spaceman).
- Multicultural food scene at the West End, including traditional Scottish fayre.
- Two of the UK's major football teams – Rangers F.C. and Celtic F.C.

## ACCOMMODATION

**Finding the right accommodation can be tough, so we've partnered with Amber – a trusted platform that helps students book housing easily.**

You can expect:

- A variety of accommodation options – Choose from a broad range of accommodation options to suit all budgets.
- Different room types – Choose from several room types including standard, en-suite and studio rooms (subject to availability).
- Prime locations – Locations convenient to your campus and local amenities.

If you are under 18, we strongly recommend arranging accommodation via Amber.

For up-to-date information, please visit [isc.strath.ac.uk/international-study-centre/accommodation](https://isc.strath.ac.uk/international-study-centre/accommodation)



## UNIVERSITY FACILITIES

**At the University of Strathclyde, the campus has everything you need for an unforgettable student experience.**

You will be part of the University from the day you start studying at the International Study Centre. As well as benefitting from resources at the International Study Centre, you will have access to all the University's facilities.

Facilities include a state-of-the-art library, a £31 million Sport, Health and Wellbeing facility, and a £60 million Learning & Teaching building.

As a student here, you can enjoy:

- A brand-new Students' Union building with games area and bars.
- Over 200 clubs and societies.
- Access to Strathclyde Sport, home to over 50 sport and fitness clubs.
- The Student Media Centre.
- The Strathclyde International Society.

**£1 billion** investment in the University campus to create a world-class environment for students (2008-2025 plan)

# UNDERGRADUATE FOUNDATION PROGRAMME

**This programme provides progression to the second year of a four-year undergraduate degree at the University of Strathclyde.\***

The Undergraduate Foundation Programme is specially designed for international students. It provides English language and academic support that prepares you fully for an undergraduate degree study at the University.

Once you complete your pathway programme and achieve the required grades, you can start the second year of your degree at the University.^

**You can choose from two routes:**

- Business and Social Sciences
- Engineering and Sciences

\*Some exceptions apply depending on the progression aim.

^Should you not reach the grades required for progression to year two, there may be the option to progress to year one.

## KEY FACTS

**Programme length:** 3 terms

**Entry dates:** September, November (Enhanced Induction) or January

## Entry Requirements

**Academic:** Good high school grades or equivalent

**English language:** Academic IELTS for UKVI 5.0 overall (with minimum 4.5 in writing and 4.0 in other areas)^

**Age:** 17+

†Students aiming to progress to Pharmacy MPharm are required to have Academic IELTS for UKVI 5.5 overall (with 5.5 in writing and no sub-skill below 5.0). Furthermore, students must pass the University interview in order to successfully progress to Pharmacy MPharm. Students wanting to progress to Speech Language Therapy BSc are required to have Academic IELTS for UKVI 6.0 with no less than 5.5 in any skill.

## PROGRESSION DEGREES\*\*

Choose from over 100 progression degrees available, including:

- Accounting BA (Hons)
- Biology with Teaching (International) BSc (Hons)
- Biomedical Engineering BEng (Hons)
- Biomedical Science BSc (Hons)
- Chemical Engineering BEng (Hons)
- Civil Engineering BEng (Hons)
- Computer Science BSc (Hons)
- Economics & Finance BA (Hons)
- Education & TESOL BA (Hons)
- Electronic & Electrical Engineering BEng (Hons)
- Finance BA (Hons)
- International Business BA (Hons)
- Law LLB
- Marketing BA (Hons)
- Mathematics with Teaching (International) BSc (Hons)
- Mechanical Engineering BEng (Hons)
- Pharmacy MPharm
- Physics with Teaching (International) BSc (Hons)
- Politics & International Relations BA (Hons)
- Psychology BA (Hons)

\*\*There is a wide range of progression degrees available. Please note that some courses have limited places, and some degrees may have further conditions for entry and progression.



For more information about the Undergraduate Foundation Programme, please visit [isc.strath.ac.uk/programmes/undergraduate-foundation](https://isc.strath.ac.uk/programmes/undergraduate-foundation)

**UK top 10  
in 23 subjects**

(The Times and The Sunday Times  
Good University Guide 2026)

# INTERNATIONAL YEAR TWO

**This programme provides a route to the third year of a four-year undergraduate degree at the University of Strathclyde.\***

The International Year Two is equivalent to the second year of a Scottish undergraduate honours degree. It is designed to support international students who perform well-above the level needed for entry to the Undergraduate Foundation Programme.

During your time with us at the International Study Centre, you will develop your English language skills and study subject-specific modules, before completing the final two years of your undergraduate degree at the University.

By completing the International Year Two programme and achieving the required grades, you can progress to the third year of a four-year undergraduate degree.

**You can choose from two routes:**

- Business
- Computer Science

## KEY FACTS

**Programme length:** 2 semesters

**Entry dates:** September, November (Enhanced Induction) or January

## Entry Requirements

**Academic:** Good high school graduation grades or equivalent academic study plus one year of further study<sup>^</sup>

**English language:** Academic IELTS for UKVI 5.5 overall (with minimum 5.0 in writing and 4.0 in other areas)

**Age:** 17+

\*Some exceptions apply; the Business Administration BBA offers the second year entry of a three-year undergraduate degree and the MEng offers the third year entry of a five-year degree.

<sup>^</sup>For the Computer Science route, students need to have a pass grade in a Maths/numerate subject, or Physics, or Computer Science, and some curriculums may require a further year of study.

## PROGRESSION DEGREES

### Business

**Progression to year 2 of a 3-year BBA (Hons):**

- Business Administration BBA
- Business Administration BBA with specialism<sup>‡</sup>

**Progression to year 3 of a 4-year BA (Hons):**

- Economics and Business Analysis and Technology
- Economics and Finance
- Economics and Hospitality and Tourism Management
- Economics and Human Resource Management
- Economics and Marketing
- Finance and Economics
- Finance and Marketing
- Hospitality and Tourism Management and
  - Economics
  - Human Resource Management
  - Marketing
- Human Resource Management and
  - Economics
  - Hospitality and Tourism Management
  - Marketing
- Marketing and Business Analysis and Technology
- Marketing and Economics
- Marketing and Finance
- Marketing and Hospitality and Tourism Management
- Marketing and Human Resource Management

### Computer Science

**Progression to year 3 of a 4-year BSc (Hons):**

- Computer Science BSc (Hons)

**Progression to year 3 of a 5-year course:**

- Computer Science MEng
- Software Engineering BSc (Hons)

<sup>‡</sup>The BBA specialisms include: Economics, Human Resource Management, Hospitality and Tourism Management, or Marketing.

**20th in the UK**  
for Computer Science

(The Times and The Sunday Times Good  
University Guide 2026)

**6th in the UK** for Marketing

(Complete University Guide 2026)



For more information about  
International Year Two, please visit  
**[isc.strath.ac.uk/programmes/  
international-year-two](https://isc.strath.ac.uk/programmes/international-year-two)**

# POSTGRADUATE PATHWAY PROGRAMMES

## Our programmes provide a pathway to a wide variety of postgraduate degrees at the University of Strathclyde.

The Pre-Masters Programme provides academic and English language study modules to prepare you for a postgraduate degree at the University of Strathclyde. We offer the two-term standard programme, and a 12-week accelerated format.

Once you successfully complete your Pre-Masters Programme and achieve the required grades, you can start your chosen Masters degree in January or September at the University.

### CHOOSE YOUR PROGRAMME

#### Pre-Masters Programme

**Programme length:** 2 terms

**Entry dates:** November (Enhanced Induction), January or March - leading to September start at the University

**Subject routes:** Business and Social Sciences, or Engineering and Sciences

#### Entry Requirements

**Academic:** Recognised first degree in a related field

**English language:** Academic IELTS for UKVI 5.5 (with minimum 5.5 in all areas) or equivalent<sup>^</sup>

**Age:** 20+

#### Accelerated Pre-Masters Programme

**Programme length:** 12 weeks (plus induction and exam week)

**Entry dates:** September - leading to January start at the University

**Subject routes:** Business and Social Sciences, or Engineering and Sciences

#### Entry Requirements

**Academic:** Recognised first degree in a related field

**English language:** Academic IELTS for UKVI 6.0 (with minimum 5.5 in all areas) or equivalent<sup>^</sup>

**Age:** 20+

<sup>^</sup>Alternatives are accepted for the English language requirement.

**Top 30 in the world**  
for Library & Information  
Management

(QS World University Rankings by Subject 2025)

### PROGRESSION DEGREES\*

Depending on which Pre-Masters Programme you choose to study, there are over 140 progression degrees available, including:

- 5G Advanced Communications MSc
- Advanced Computer Science MSc
- Advanced Mechanical Engineering MSc
- Advanced Pharmacology MSc
- Biomedical Sciences MSc
- Business & Management MSc
- Cyber Security MSc
- Data Analytics MSc
- Information & Library Studies MSc
- Information Management MSc
- International Accounting & Finance MSc
- Law LLM
- Marketing MSc
- Quantitative Finance MSc
- TESOL and Intercultural Communication MSc

\*There is a wide range of progression degrees available. Some degrees may have further conditions for entry and progression.



For more information about the postgraduate pathway programmes, please visit [isc.strath.ac.uk/programmes/pre-masters](https://isc.strath.ac.uk/programmes/pre-masters)

### ENGLISH LANGUAGE PREPARATION

If you meet the academic entry requirements for our pathway programmes but need help with your English language, you can join our English Language Preparation programme first.


The programme is designed to develop your English language skills and introduce you to essential academic and study skills before starting your main pathway programme at the International Study Centre.

For more information about the English Language Preparation programme, please visit [isc.strath.ac.uk/programmes/english-language-preparation-course](https://isc.strath.ac.uk/programmes/english-language-preparation-course)





# Join us on social media

 /iscstrathclyde  
 /strathclydeisc  
 /UniversityofStrathclydeInternationalStudyCentre  
**#MyStrathStory**

## How to apply

You will need to complete an application form and submit the relevant documentation.

You can apply through your local education agent. Alternatively, you can apply directly via our website and one of our dedicated Student Enrolment Advisors will be happy to provide support through every step of the application process.

Full information on how to apply, fees, entry requirements and more, visit [isc.strath.ac.uk/how-to-apply](http://isc.strath.ac.uk/how-to-apply)



The International Study Centre programmes are provided by Study Group in collaboration with the University of Strathclyde.

### Disclaimer

This guide is intended as a general guide for students considering entry to the University of Strathclyde International Study Centre from October 2025. University of Strathclyde International Study Centre is operated, and its programmes offered by Study Group Limited ('Study Group'). This guide forms no part of any contract between you and Study Group except as provided below. The guide is prepared in advance of the academic year to which it relates, and Study Group makes every effort to ensure that the information contained here is accurate.

Although reasonable steps are taken by Study Group to provide the programmes and services described, Study Group cannot guarantee the provision of any programme. Any programme may be altered or withdrawn owing to circumstances beyond Study Group's reasonable control.

Such circumstances include (but are not limited to) industrial action, lack of demand, departure of key personnel, change in government policy, withdrawal, or reduction of funding, change of law or changes necessitated by pandemic or epidemic. Study Group will take such steps as are available to it to minimise the effect of any alteration or withdrawal of a programme and we will notify you of such alteration or withdrawal as soon as possible. Such steps may include the offer of a place on an alternative programme. Alternatively you may withdraw your application without any liability for fees (including the enrolment fee).

Please note that University of Strathclyde International Study Centre's website is the most up-to-date source of information regarding programmes and facilities, and we strongly recommend that you always visit the website before making any commitments.

University of Strathclyde and its logo are registered Trade Marks of the University of Strathclyde. 'Study Group' and the Study Group logo are registered Trade Marks of Study Group. Unless otherwise stated, all material in this publication is copyright of Study Group. No part of this publication may be reproduced, stored in a retrieval system or transmitted in any form, or by any means, electronic, mechanical, photocopying, recording or otherwise, without the permission of Study Group.

For more information, please visit [studygroup.com](http://studygroup.com)

