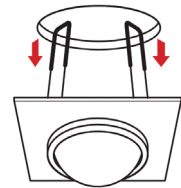




## Chromotherapy Installation

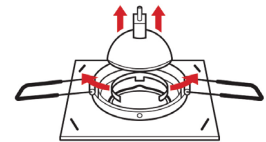
### Step 1

Chromotherapy bulbs are installed from the inside of the unit by pulling down the metal casing on the roof. Grab the corners carefully with this step. If needed, the dust cover can be removed if you wish to change the bulbs from the top of the unit.



### Step 2

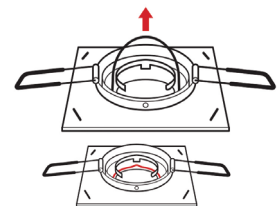
Pinch the wire grip and pull up. This will release the bulb from the housing.



### Step 3\*

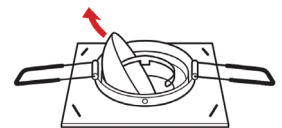
Remove the keeper-wire that holds the dome below in place (highlighted in red). You may need to use a flat head screwdriver on the flattened part of the wire to pull out.

\*If you do not have glass domes under the lights, please skip step 3 and move on to Step 4.



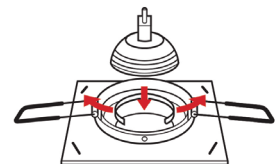
### Step 4

Push the dome of the light up through the light housing.



### Step 5

With the dome removed, pull back wire grips and install chromotherapy light. Reconnect power supply to the newly installed chromotherapy light. Place the housing back to its proper location.



### Step 6

Turn interior lights on to ensure proper connectivity. Replace dust covers to roof panel of sauna.

**NOTE:** If dust cover does not sit because of chromo bulbs, shim the cover using flat objects.

